

# ColorWorks® CW-C4010 Colour Inkjet Label Printer



Label Printers

Commercial

## A powerful and compact on-demand commercial colour label printer.

**Reliability you can count on** — engineered by Epson for demanding applications; backed by industry-leading service and support

**Exceptional image quality** — crisp photo-quality images; up to 1200 dpi resolution with variable droplet sizes

**Seamless integration** — compatible with ZPL II, major middleware, SAP, Windows®, Mac® and Linux

**Compact, robust design** — dust- and water-resistant for high-duty-cycle environments; ideal for commercial use and smaller workspaces

**Wi-Fi connectivity<sup>1</sup> (optional)** — print from compatible devices<sup>2</sup>

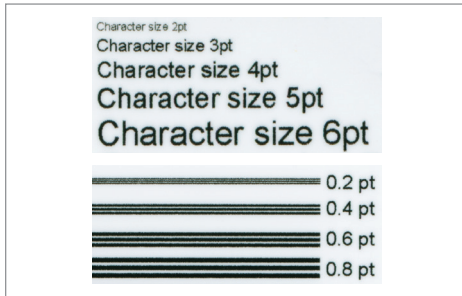
**Low cost** — comparable to existing thermal transfer printers<sup>3</sup>

**Durable, high-quality labels** — meets BS-5609 certification<sup>4</sup>

**Remote printer management** — for managing large fleets over the network

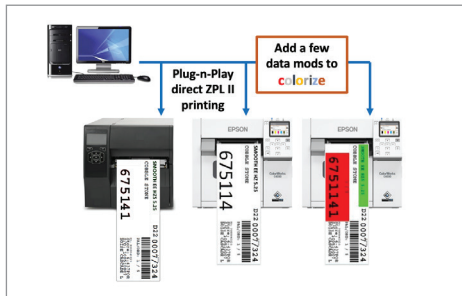
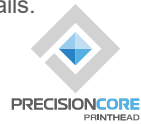
**Enhanced productivity** — eliminate the need to preprint; speeds up to 100mm per second<sup>5</sup>; fast time to first label

**Easy to operate** — colour LCD screen; automatic Nozzle Verification Technology; Windows driver; fast media and ink loading



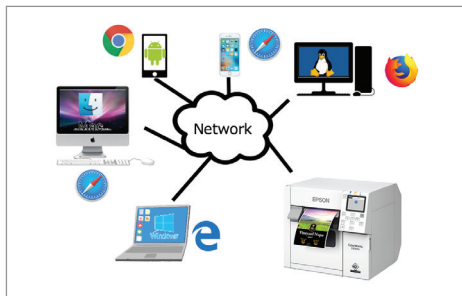
## High-quality Printing

Epson-engineered PrecisionCore® TFP® printhead technology delivers ultra sharp text and precise barcodes. It also produces varying droplet sizes that, coupled with a 1200 x 1200 dpi resolution, can produce a huge gamut of vibrant, accurate colours, smooth gradations and fine image details. So, whether the challenge is to produce complex informational labels or high-quality product labels, the CW-C4010 is up to the challenge.



## ESC/Label and ZPL II Interface Languages

ZPL II capabilities allow you to experience the advantages of Epson inkjet technology without reprogramming existing systems. ESC/Label command extensions can be added to unlock the power of color. Leverage color for color-coded fields, product pictures, logos and marketing messages to improve overall business processes and brand image.



## Remote Management Tools

The CW-C4010 can be used in large enterprises. To support these environments, powerful remote management tools make it easy to manage a fleet of Epson printers on a network. These allow IT support teams to do mass configuration of printer settings, generate automatic alerts for items needing attention, deploy automatic firmware updates, generate reports on usage of devices and consumables, and more.

Media	Gloss Black ink SJIC41P(BK) UltraChrome	Matte Black ink SJIC41P(MK) UltraChrome
Plain paper (uncoated)	Good image	Richer image – darker black
Matte paper (coated)	Good image	Richer image – darker black
Matte synthetic (coated)	Good image, BS 5609 certified <sup>4</sup>	Richer image – darker black, BS 5609 certified <sup>4</sup>
Textured paper	Good image	Richer image – darker black
Wristband	Excellent image	Richer image – darker black
Gloss paper (coated)	Excellent image	Not recommended
Gloss film (coated)	Excellent image	Not recommended

## Gloss or Matte Versions Available

The CW-C4010 uses highly durable pigment-based inks with gloss or matte versions available to best suit the labeling application. The gloss black ink can print on a wider variety of substrates. The matte black ink offers a darker, sharper black text and images on matte media. Both have been BS5609 certified<sup>4</sup>.

**Printer**

**Print Method:** Serial inkjet PrecisionCore TFP  
**Image Security:** Nozzle Verification Technology, auto head maintenance and auto missing dot compensation  
**Ink Type:** UltraChrome® DL pigment ink  
**Ink Colors:** CMYK in individual cartridges  
**Control Panel:** 2.7" full-color graphic display and 9-key pad allow for local configuration and operation  
**Indicators:** Power, status and pause LEDs, beeper  
**Color Correction:** ICC color profiles, RGB spot color substitution, driver-based color adjustment  
**Banner Printing:** Supports pages sent in segments to produce large signs without gaps  
**Barcode Font:** UPC-A, UPC-E, JAN13(EAN), JAN8(EAN), Code39, ITF, Codabar, Code93, Code128, GS1-128, GS1 DataBar Omnidirectional, GS1 DataBar Truncated, GS1 DataBar Limited, GS1 DataBar Expanded  
**Two-dimensional Code Printing:** PDF417, QR Code, Maxi Code, GS1 DataBar Stacked, GS1 DataBar Stacked Omnidirectional, GS1 DataBar Expanded Stacked, DataMatrix, Aztec Code, MicroPDF417, Micro QR Code  
**Print Width:** 108 mm max  
**Cutter Life (cuts):**  
 Paper Liner up to 1.5 M  
 Synthetic Liner up to 0.5 M  
 Continuous Matte Paper up to 0.5 M  
 Continuous Gloss Paper up to 0.3 M  
 Continuous Synthetic up to 0.1 M  
**Printer Durability:**  
 Permanent printhead - designed to last the life of the printer  
 Feeding mechanism 150 km before major service

**Media**

**Media Sources:** Internal roll-fed, rear-feed fan fold, external rear-powered unwinder  
**Media Construction:** Standard die-cut label with or without black mark, die-cut label with matrix on and black mark, continuous tag stock with or without black mark, continuous label with or without black mark, wristband with black mark  
**Media Types:** Plain paper, Matte paper, Synthetic label, Gloss paper, Gloss film, Wristband  
**Width (including liner)**  
 Roll: 1.0" - 4.41" (25.4 - 112mm)  
 Fan fold: 2.0" - 4.41" (50.8 - 112mm)  
**Thickness:** 0.0033" - 0.009" (0.084mm - 0.229mm)  
**Label Length:**  
 Max. 16" (406.4 mm)  
 Min. 0.31" (8mm)  
**Internal Roll Size:**  
 Outer diameter: 4" (101.6 mm) max  
 Inner core diameter: 1.75" - 2.25" (44 - 57 mm)  
**Die-cut Label Gap:** 2 mm - 6 mm  
**Inner Core Diameter:** 1.75" - 2.25" (44 - 57 mm)  
**Media Sensors:** Gap, black mark, media cut  
**Die-cut Label Gap:** 2 mm - 6 mm  
**Black Mark Size:** Min. 0.51" x 0.16" (13 mm x 4 mm) (W x H)

**General**

**Interfaces:** Ethernet 1000BASE-T/100BASE-TX/10BASE-T USB 2.0  
**Operating System:** Windows 11, 10, 8.1, Windows Server® 2019, 2016, 2012 R2 (64 bit), 2012 (64 bit), Mac OS® 10.9.5 or later, macOS® 11.x or later  
**Direct Command-based Printing:** Zebra ZPL II native language support, plus command extensions, to allow for colorization of data; Epson ESC/Label color command language  
**Remote Management Tools:** Epson Device Admin, WebConfig, Epson Monitoring Tool, Printer Setting Utility, Epson Deployment Tool, EpsonNet Setup Manager, EpsonNet Config SE, Epson Firmware Updater  
**Operating Temperature:**  
 41 to 95 °F, 5 to 35 °C  
 20 to 80% RH humidity

**General (continued)**

**Storage Temperature:**  
 -4 to 140 °F, -20 to 60 °C  
 5 to 85% RH humidity  
**Power Consumption:**  
 28.2 W Printing (average printing)  
 2.6 W Standby  
 0.13 W Power Off State  
**Rated Voltage:** AC 100 - 240 V AC  
**Rated Frequency:** 50 - 60 Hz  
**Dimensions (W x D x H):**  
 Printer: 310 mm x 283 mm x 285 mm  
 Shipping: 396 mm x 446 mm x 469 mm  
**Weight:**  
 Printer: 13 kg  
 Shipping: 17.5 kg  
**Acoustic Noise:** Approx. 58 dBA  
**EMI:** FCC/ICES-003 Class A, VCCI class A, CE Marking  
**Safety Standards:** UL1950/CSA C22.2 No.950, TUV, GOST-R  
**Limited Warranty:** 1-year RTB

**What's in the Box**

ColorWorks CW-C4000 printer, AC adapter, AC cable, USB cable, Full set of Ink Cartridges (SJC41P-C, SJC41P-M, SJC41P-Y, SJC41P-BK/MK), Maintenance box, Roll paper, Safety Standards and Approvals, Start here poster

**Eco Features**

RoHS compliant  
 Recyclable product<sup>6</sup>

**Ordering Information**

CW-C4010 Printer	C31CK03108
SJC41P-BK (Gloss Black)	C13T52M140
SJC41P-C (Cyan)	C13T52M240
SJC41P-M (Magenta)	C13T52M340
SJC41P-Y (Yellow)	C13T52M440
SJC41P-MK (Matte Black)	C13T52M540
SJMB4000 Maintenance Box	C33S021601
WiFi Dongle OT-WL06	C32C891324

Print Mode	Resolution (dpi)	Head Passes	Print Speed (inches per second) 4" (101.6mm) print width
Max Speed	300 x 600	1	3.94 ips (100 mm/s)
Speed	600 x 600	1	2.76 ips (70 mm/s)
Normal	600 x 600	2.5	1.89 ips (48 mm/s)
Quality	600 x 1200	6	0.71 ips (18 mm/s)
Max Quality	1200 x 1200	12	0.31 ips (8 mm/s)

Print speeds are based on the print engine speed only. Total throughput time for any label depends on factors including label size, file size, print resolution, speed of data transmission and other factors.

**1** With optional WiFi Dongle OT-WL06-321 (sold separately). | **2** Most features require an Internet connection to the printer, as well as an Internet- and/or email enabled device. | **3** Printers and consumable costs are similar when comparing similarly featured leading brand thermal transfer printers and supplies for similar high-durability images on similar media. | **4** ColorWorks CW-C4010 inkjet printer with UltraChrome® DL pigment ink, used in combination with Neenah Kimdura™ poly media, has been BS-5609 certified. | **5** Printing in Max Speed Mode, 300 x 600 dpi resolution, 4" (101.6 mm) print width. Print speeds are based on the print engine speed only. Total throughput time for any label depends on factors including label size, file size, print resolution, speed of data transmission, etc. | **6** For convenient and reasonable recycling options, visit [www.epson.com/recycle](http://www.epson.com/recycle) |

**Better Products for a Better Future™**  
[eco.epson.com](http://eco.epson.com)

**Epson Australia Pty Ltd**  
 Level1, 3 Talavera Road, Macquarie Park,  
 NSW 2212

**Epson New Zealand**  
 7/9 Fanshawe Street, Auckland CBD, Auckland  
 1010

[www.epson.com.au](http://www.epson.com.au)  
[www.epson.co.nz](http://www.epson.co.nz)

EPSON, ColorWorks, PrecisionCore and UltraChrome are registered trademarks, EPSON Exceed Your Vision is a registered logomark and Better Products for a Better Future and Epson Connect are trademarks of Seiko Epson Corporation. Mac is a trademark of Apple Inc., registered in the U.S. and other countries. Android is a trademark of Google LLC. Windows is either a registered trademark or trademark of Microsoft Corporation in the United States and/or other countries. Wi-Fi® is a registered trademark and Wi-Fi CERTIFIED™ is a trademark of Wi-Fi Alliance®. All other product and brand names are trademarks and/or registered trademarks of their respective companies. Epson disclaims any and all rights in these marks.

Contact:

**Printzone.**

**1300 782 636**