

BETTER YOUR PRODUCTIVITY WITH OUR ALL-PURPOSE WORKFORCE SCANNERS.



Focus on work that matters with the high-speed and all-purpose Epson WorkForce DS-530II and DS-570WII scanners. Designed to handle a wide variety of media, you'll be able to scan anything from fragile paper documents to plastic cards, and even thick books with its flatbed option*. To top it off, scan your documents to your device and share them to your work group through seamless mobile scanning and network connectivity**.



Scan up to A3



Scan from 27gsm to 413gsm



One Pass Duplex Scanning



Wi-Fi**



Epson Smart Panel**

IT'S IN THE DETAILS.

Versatile, High-speed Scanning

Boasting a scan speed of 35ppm/70ipm, the WorkForce scanners can handle a wide variety of media efficiently and seamlessly.

Wireless Connectivity**

Enjoy greater convenience by scanning wirelessly to your device or cloud storage services.

Flatbed Option*

A Flatbed Dock can be used with the Epson Perfection™ V39 to enable both sheetfed and flatbed scanning.



Scanning your documents has never been easier with the DS-530II and DS-570WII scanners. With high scanning speeds, the versatility to handle a wide range of document types and sizes and even wireless scanning[^], you will be able to fully focus on work that matters with this perfect office companion.

Versatile, High-speed Scanning

Boasting a scan speed of up to 35ppm/70ipm, the DS-530II and DS-570WII scanners handle a wide variety of media between 27-413 gsm, so you can scan anything from paper documents to plastic cards such as ID, credit and business cards efficiently and seamlessly.



Wireless Connectivity

The DS-570WII provides scanning convenience via Wi-Fi for Smart Device.



Wi-Fi A/P

Once this mode is turned on, the DS-570WII acts as an access point, allowing mobile devices to connect directly to the scanner without the need for a router or access point.

[^] Wireless connectivity available only on DS-570WII.

Flatbed Option* (DS-530II only)

A Flatbed Dock can be used with the Epson Perfection V39 to provide a flatbed option for users who need to scan thick objects such as books, or small and fragile documents that can be easily damaged such as receipts.



* Push scanning is not supported for Flatbed. For Mac, installation of the V39 scanner driver is required.

User-friendly Features

Automatic Feeding Mode

The Automatic Feeding Mode enables large volumes of documents to be scanned continuously. In addition, this mode allows you to scan documents of different sizes in one go without needing to arrange them by size, and saving them as a single PDF.



Double Feed Detection Skip Function

Activate the Double Feed Detection Skip function to scan documents with stickers and labels.



Paper Protection Function

Upon detection of abnormal paper feeding or stapled/folded paper, scanner will automatically stop to prevent damage to important documents.



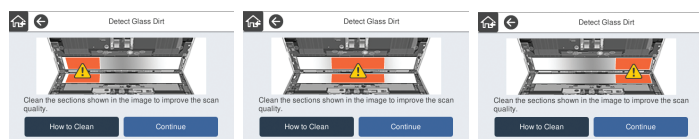
Epson Smart Panel

You can download the Epson Smart Panel app onto your mobile device to access the DS-570WII, allowing you to easily scan, save and share documents wirelessly with your mobile device.



Image Sensor Glass Dirt Detection

A notification will be sent upon detection of dirt in three areas before scanning. This reduces the risk of re-scanning due to bad image quality, improves the Scan-to-workflow and increases business productivity.



Scan Fragile and A3 Documents Easily

Scan small and fragile documents, as well as A3-sized documents using a carrier sheet that could be automatically detected by the DS-530II and DS-570WII. Alternatively, you may scan fragile documents without using a carrier sheet by turning on the Slow Scan Mode.

Document Management



Document Capture PRO

Document Capture Software*

Easily scan, view, edit, save and transfer scanned documents. The software optically recognises barcodes, characters and blank pages in scanned documents to separate them into different folders. It allows you to create up to 30 customised job settings, making multiple scan jobs a breeze.

Epson Scan 2 Features

Text Enhancement

Improves text recognition when scanning text documents, whether in colour, greyscale or black-and-white. Removes background for better clarity, which is especially useful for double-sided printed documents.

Document Skew Correction

Automatically adjusts and straightens scanned images.



Colour Enhancement & Colour Dropout

Remove or enhance the visibility of ink signatures such as "Confidential" and "Urgent" stamps. Users can pick one of the preset colours (red, green, blue, pink, purple, yellow, orange, or all colours except black), or use the customised settings to dropout or enhance up to 5 colours of your choice with a single scan. Up to 10 preset colours can be saved for reuse.

PDF Features for Added Convenience

The built-in OCR enables searchable PDF files. Secure your PDF files by setting a password to prevent unauthorised viewing, editing or printing.

* Document Capture Pro (Windows), Document Capture (Mac OS X)



The WorkForce DS-530II and DS-570WII scanners come equipped with all-purpose functions, making work across different industries more productive and seamless.

Finance

The finance industry such as banks, insurance companies, loan companies and accounting companies handle a large number of transactions per day and very frequently require identification and supporting documents to be submitted. This represents a large volume of documents that need to be archived on a daily basis.

- Share scanners among tellers or back office staff with Wi-Fi connectivity*.
- Enables quick scanning of documents without the use of router with Wi-Fi A/P Mode (DS-570WII only); Suitable to be used in roadshows.
- Scan thick documents such as passports seamlessly with an optional flatbed dock and the Perfection V39 (DS-530II only).
- Scan media of different sizes: receipts, ID cards, bank slips, identification documents, application forms and even general administrative documents.
- Scan fragile or small pieces of paper such as receipts or carbon copy paper without damaging them. The DS-530II/570WII offer a carrier sheet that allows you to safely scan these documents as they pass through the scanner. To scan multiple receipts or carbon copies, place each piece into a carrier sheet to scan them into a single PDF document. The ADF on both scanners supports up to 5 carrier sheets.
- Reduce the risk of damaging important documents such as bank slips by activating the Slow Scan Mode. This slows down the scanning speed of the scanner without affecting the scan quality.
- With the Automatic Feeding Mode, large volumes of documents can be scanned easily. Documents of different sizes can be conveniently combined and saved as a single PDF document.

* Wireless and BLE connectivity available only on DS-570WII.

Hospital

Medical records are sensitive, private and contain valuable information. It is therefore essential for medical institutions to archive such information lest the hard copy is misplaced or destroyed. Archiving medical records to the cloud also allows medical professionals from different medical institutions to access a patient's medical records.

- Share scanners among nurses at the reception with Wi-Fi connectivity*.
- Scan ID cards, identification documents and medical records of different sizes with the DS-530II/570WII.
- Scan thick documents such as passports or bundled medical records seamlessly with an optional flatbed dock and the Perfection V39 (DS-530II only).
- Scan sensitive documents such as medical records without damaging them. Both scanners offer a carrier sheet that allows you to safely scan these documents as they pass through the scanner.



- Scan fragile media such as carbon copy paper without damaging them. The DS-530II/570WII offer a carrier sheet that allows you to safely scan these documents as they pass through the scanner. In addition, you can reduce the risk of damaging extremely fragile documents by activating the Slow Scan Mode. This slows down the scanning speed of the scanner without affecting the scan quality.
- With the Automatic Feeding Mode, thick documents such as policy formulation papers, tender contracts, proposals and general administrative documents of different sizes can now be scanned easily and saved into a single PDF document.



- With the Automatic Feeding Mode, huge stacks of patients' medical records, application forms and general administrative documents can now be scanned easily and saved into a single PDF document.
- Scan medical records with labels attached with the Double Feed Detection Skip function. This enables them to be scanned easily without any paper jam.

Government

Information that government agencies possess is especially sensitive and confidential and it is of interest for such documents to be archived. Document archival also allows relevant government agencies to access the same information (e.g. citizen identification information).

- Share scanners at the back office with Wi-Fi connectivity*.
- Scan ID cards or visitor registration documents at entry with the DS-530II/570WII. If passports need to be scanned, it can be done seamlessly with an optional flatbed dock and the Perfection V39 (DS-530II only).

Education

Supplementary materials may require scanning to be projected in class, and can be archived for future reference and sharing. It is also important for educational institutions to archive examination papers, certificates, transcripts and testimonials, so they can be reprinted if they get misplaced.



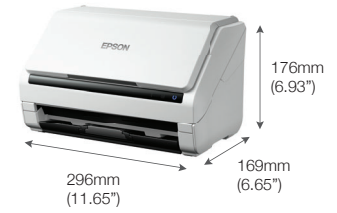
- Share scanners at the back office with Wi-Fi connectivity*.
- With the Automatic Feeding Mode, transcripts, result slips, certificates and testimonials can easily be mass scanned for archival purposes.
- Scan educational media such as books or magazines seamlessly with an optional flatbed dock and the Perfection V39 (DS-530II only).

* Wireless and BLE connectivity available only on DS-570WII.

SPECIFICATIONS

Product Name	DS-530II	DS-570WII
Scanner		
Scanner Type	A4 sheet-fed, one-pass duplex colour scanner	
Sensor Type	Colour Contact Image Sensor	
Scanning Method	Fixed carriage and moving document	
Light Source	RGB LED	
Optical Resolution ^{*1}	600 x 600 dpi	
Output Resolution	50 - 1,200 dpi (in 1 dpi increments)	
Bit Depth	Each colour (RGB): 10 bit input / 8 bit output	
Document Size		
Minimum	50.8 x 50.8 mm	
Maximum	215.9 x 609.6 mm	
Supported Paper Weight	27 - 413 g/m ² (A8 or less 127 - 413 g/m ²)	
ADF Capacity	50 sheets (80g/m ²)	
Daily Scan Volume	Up to 4,000 pages / day	
Multi-feed Detection	Ultrasonic Sensor and Length Detection	
Interface	USB 3.2 Gen 1	USB 3.2 Gen 1, Wi-Fi (802.11 b/g/n)
Scanning Speed ^{*2}		
Resolution (Colour/Greyscale/Mono)	Simplex / Duplex	
200 dpi	35 ppm / 70 ipm	
300 dpi	35 ppm / 70 ipm	
600 dpi	12 ppm / 24 ipm	
Drivers and Software		
Supported OS (Scanner Driver)		
Windows	Windows XP / Vista / 7 / 8 / 8.1 / 10 / Server 2003 / Server 2008 / Server 2012 / Server 2016	
Mac	Mac OS X 10.6.8 or later	
Driver Compatibility	TWAIN, SANE, WIA, ICA, ISIS	TWAIN, SANE, WIA, ICA
Bundled Software	Epson Scan 2 ISIS Driver (Web Download) Epson Scan OCR Component Epson Scan PDF Extensions Document Capture Pro (Windows) Document Capture (Mac)	Epson Scan 2 Epson Scan OCR Component Epson Scan PDF Extensions Document Capture Pro (Windows) Document Capture (Mac) Epson Smart Panel (Apple App Store / Google Play Store)
File Format	Epson Scan 2: JPEG, TIFF, Multi-TIFF, PDF, Searchable PDF, BMP, PNG Document Capture Pro (Win): JPEG, BMP, PDF, Searchable PDF, TIFF, Multi-TIFF, PNG, DOCX, XLSX, PPTX	
Electrical Specifications		
Rated Voltage	AC 100 - 240 V	
Rated Frequency	50 - 60 Hz	
Power Consumption		
Operating	11W	11W / 12W (Wi-Fi on)
Ready Mode	5.4W	5.4W / 5.5W (Wi-Fi on)
Sleep Mode	1.0W	1.0W / 1.3W (Wi-Fi on)
Power Off	0.1W	0.1W
Environmental Conditions		
Temperature		
Operating	5 - 35°C	
Storage	-25 - 60°C	
Humidity		
Operating	15 - 80% (No condensation)	
Storage	15 - 85% (No condensation)	
Options & Consumables		
Flatbed Dock (DS-530II only)	-	Order Code B 12B 819011
Roller Assembly Kit	200,000 scans	B 12B 819671
Carrier Sheet	3,000 scans	B 12B 819051
Cleaning Kit	-	B 12B 819291

Dimensions & Weight
DS-530II / DS-570WII
Weight: 3.7 kg / 8.16 lb



^{*1} Scanning resolution as defined by ISO14473.
^{*2} Based on A4 documents.

- What's in the box:
- Scanner Main Unit
 - USB Cable
 - AC Adapter
 - Power Cord
 - Software CD
 - Setup Guide

© 2021 Epson Singapore Pte Ltd. All Rights Reserved. Reproduction in part or in whole, without the written permission from Epson, is strictly prohibited. EPSON and EXCEED YOUR VISION are registered trademarks of Seiko Epson Corporation. All other products names and other company names used herein are for identification purposes only and are the trademarks or registered trademarks of their respective owners. Epson disclaims any and all rights in those marks. Print samples shown are simulations only. Specifications and product availability are subject to change without notice and may vary between countries. Please check with local Epson offices for more information.

Apple, iPad and iPhone are trademarks of Apple Inc., registered in the U.S. and other countries. App Store is a service mark of Apple Inc.

Android is a trademark of Google Inc.

Information correct as at January 2021

Printzone.

1300 782 636